



Lombard Wharf, London
Battersea SW11

GARTONJONES.COM



Lombard Wharf, London Battersea, SW11

£1,390,000

A spacious River facing 2 double bedroom apartment of approx. 1040sq.ft (96.6sq.m) on the 16th floor (with lift) of this new riverside development in Battersea. The apartment benefits from a dual aspect open plan reception room with a smart kitchen diner (AEG appliances), there is access from all principle rooms to a full width wrap around terrace offering panoramic views of the London skyline taking in many iconic landmarks. The apartment further benefits from wood flooring, comfort cooling, great storage including fitted wardrobes to the master bedroom and a utility cupboard housing a washer dryer. Residents have the use of a concierge service, gym and cycle storage, are within easy reach of local shops and restaurants including a short walk to the transport links of Clapham Junction.

- 1040sq.ft (96.6sq.m)
- 16th Floor (With Lift)
- 2 Double Bedrooms
- 2 Bathrooms (1 En-Suite)
- Dual Aspect Open Plan Reception Room
- Integrated Kitchen / Diner
- Wrap Around Terrace with Far Reaching Views
- Concierge Service, Residents Gym & Cycle Storage
- Close to Local Shops & Restaurants
- Walking Distance to the Transport Links of Clapham Junction

GARTON JONES.COM

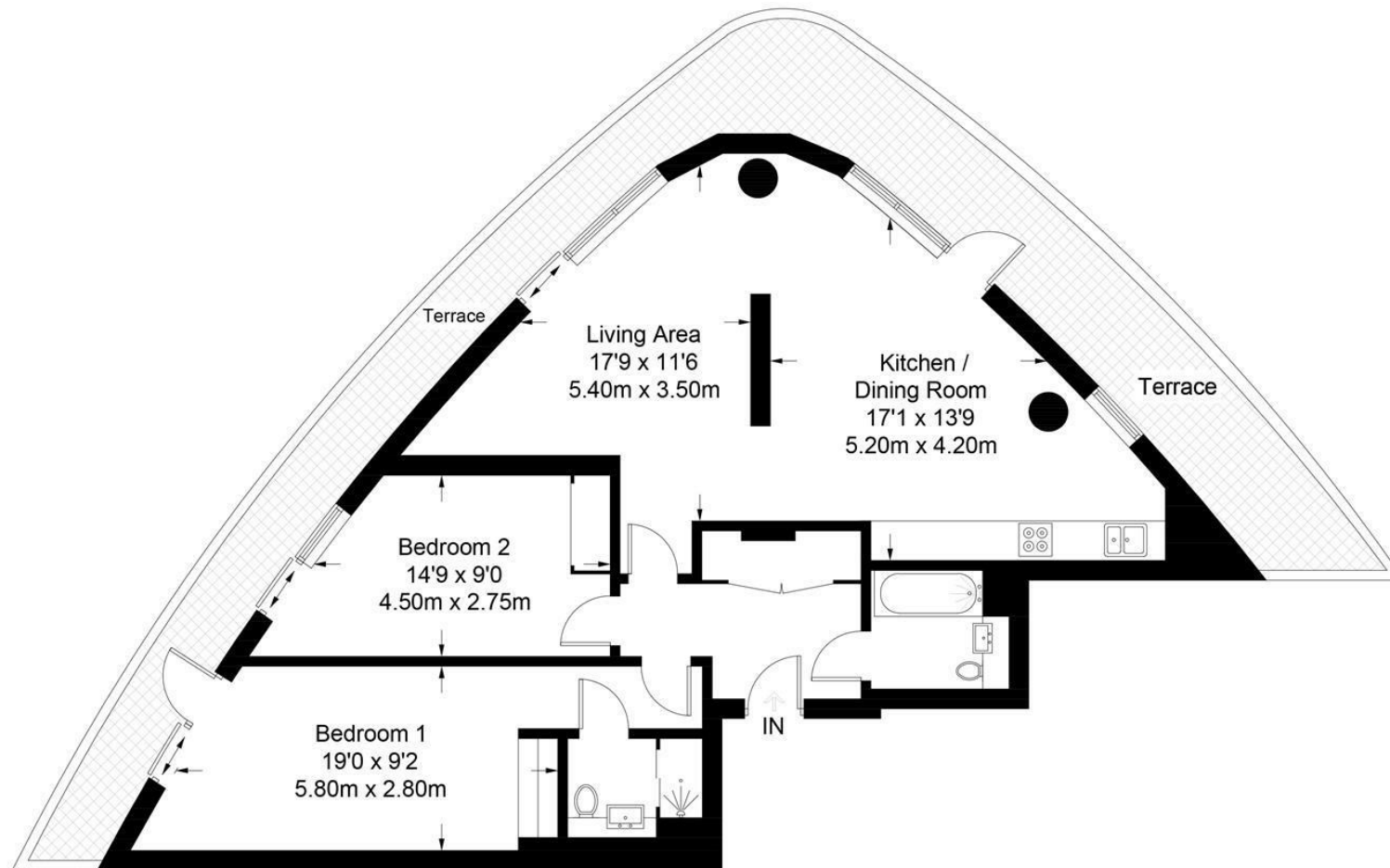
9 Albert
Embankment
London
SE1 7SP

Lettings:
+44 (0) 20 7735 1888
nineelms@gartonjones.com
www.gartonjones.com



Lombard Wharf

Approximate Gross Internal Area = 1040 sq ft / 96.6 sq m



Sixteenth Floor

Not to scale, for guidance only and must not be relied upon as a statement of fact.
All measurements and areas are approximate only and have been prepared in accordance with the current edition of the RICS Code of Measuring Practice.

